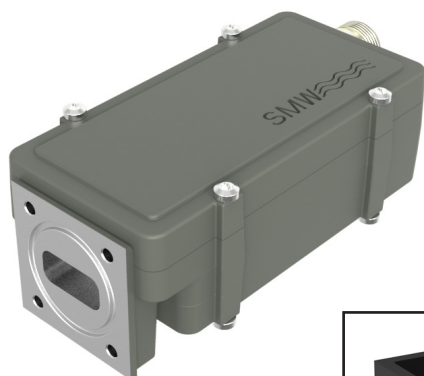


## Single band PLL LNB

### Single Ku-Band professional LNB



**DVBS2X**

The professional PLL has Low Phase Noise, High IP3 and Low Noise Figure.

Options include customized LO, customized gain, separate DC power input and separate input for the external 10 MHz reference.

### Features

- Choose between Internal Ref. or External Ref. input models
- Several LO frequencies
- Low phase noise to meet the VSAT profile of DVB-S2X
- High P1dB and IP3
- Available as TWIN for H/V reception
- Lower gain versions for larger antennas
- Wide operating temperature range

### TECHNICAL SPECIFICATIONS

MODEL:	9.75	10.00	10.00 E	10.25	10.50	10.60	10.70	10.75	11.20	11.25	11.30
Input Frequency	10.70–11.80 GHz	10.95–11.80 GHz	10.95–12.10 GHz	11.20–11.70 GHz	11.45–12.20 GHz	11.70–12.75 GHz	11.65–12.75 GHz	11.70–12.75 GHz	12.20–12.75 GHz	12.20–12.75 GHz	12.25–12.75 GHz
LO Frequency	9.75 GHz	10.00 GHz	10.00 GHz	10.25 GHz	10.50 GHz	10.60 GHz	10.70 GHz	10.75 GHz	11.20 GHz	11.25 GHz	11.30 GHz
Output Frequency	950–2050 MHz	950–1800 MHz	950–2100 MHz	950–1450 MHz	950–1700 MHz	1100–2150 MHz	950–2050 MHz	950–2000 MHz	1000–1550 MHz	950–1500 MHz	950–1450 MHz
Gain	60dB typ., (55dB min.)										
Flatness	±0.4 dB max. within 30 MHz, ±3 dB max. over band										
Noise Figure / Noise Temperature	0.8 dB / 59 K typ.										
Phase Noise	-35 dBc @ 10 Hz	-62 dBc @ 100 Hz	-75 dBc @ 1 kHz	-83 dBc @ 10 kHz	-93 dBc @ 100 kHz	-120 dBc @ ≥1MHz typ.					
Image Rejection	40 dB min.										
Output P1dB	+15 dBm typ.										
Output IP3	+25 dBm typ.										
Output VSWR	2.1:1 typ.										
Output Connector	F-type 75Ω / N-type 50Ω Option SMA-type 50Ω										
Input Waveguide	WR 75 / R 120. Flange PBR 120.										
Input VSWR	2.3:1 typ., with optional isolator 1.25:1 max.										
LO Leakage	-60 dBm @ waveguide input										
MODELS with Internal Reference	±5 kHz -20 to +70°C (±10 kHz -40 to +80°C), ±10 kHz -20 to +70°C (±15 kHz -40 to +80°C)										
MODELS with External 10 MHz Reference	Sine Wave, Level: -10 to +10 dBm. Supplied through output connector (with no ext. 10 MHz ref. present LO shifts -20 ppm)										
DC Input	+12 to +24 V, 270 mA typ. Supplied through output connector										
Temperature Range	Storage and operating: -40 to +80°C										
Dimensions	122 x 57 x 46 mm (F- & SMA-connector), 128 x 57 x 46 mm (N-connector), for drawing, see <a href="http://www.smw.se">www.smw.se</a>										
Weight	329 g (F- & SMA-connector), 345 g (N-connector)										
Options	Lower gain and variation, LO frequency and frequency range, Separate DC input connector F-, N- or SMA-type, Twin-LNB with OMT + bend and protecting cover, SMA connector input via transition. Extended input Voltage +12 to +28 VDC, Pressurizable										
Miscellaneous	Enclosed conductive O-ring, mounting screws (M4 x 10) 4 pcs.										

**SEE THE RF OVER FIBER AND L-BAND SECTIONS FOR OUTPUT OPTIONS**

Rev.08-21-4G

Above parameters are generic product family values. For part number specific min./max. values, please consult us.

Specifications are subject to change without notice. Products from Swedish Microwave AB are made for commercial use.